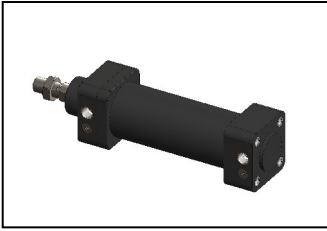


# Plastic Cylinder - with Food Approval (PA12)

TYPE 1102 / 1110\* / 1120

Pneumatic Plastic Cylinders based on ISO 15552:  $\varnothing 32 - 50$  mm



Double-acting

Cylinder based on ISO 15552 with piston diameter 32 mm to 50 mm with mechanical end position damping, without magnetic piston.  
Standard cylinder made of PA6 plastic or cylinder with food approval made of PA12 plastic is available.

## TECHNICAL DATA

<b>Cylinder pipes and heads</b>	Plastic PA6 or PA12 glass fiber reinforced
<b>Piston rod</b>	Stainless steel A4 (1.4401)
<b>Sealing materials</b>	NBR; VITON
with PA6	P5600
with PA12	
<b>Control medium</b>	Filtered, oiled or non-oiled compressed air
<b>Temperature range</b>	-20 to 70°C
<b>Pressure range</b>	1 to 10 bar
<b>Food approvals PA12</b>	FDA; EU Directive 2002/72/EC
<b>Optional on request</b>	- Water as the control medium - Magnetic pistons - Full plastic version - Antibacterial version - electr. end position damping - Drinking water approval for cylinder interior: KTW; DVGW; ACS; NSF61; WRAS Piston $\varnothing$ 80 mm - CETOP connection dimensions

## ACTUATING POWER

of double-acting cylinders

Piston $\varnothing$ [mm]	Impact force [N] at operating pressure (bar)					Retracting force in % of the impact force
	2	4	6	8	10	
32	145	290	430	580	729	86
40	230	450	680	900	1130	84
50	350	710	1060	1410	1770	84

## FEATURES

- Food approvals for PA12 material
- Plastic version is corrosion-resistant
- Strokes 25 - 300 mm
- Piston  $\varnothing$  32 - 50 mm
- Low weight
- Accessories for cylinders made of plastic

## CYLINDER ORDERING CHART

**Type 1110 - double-acting cylinder**

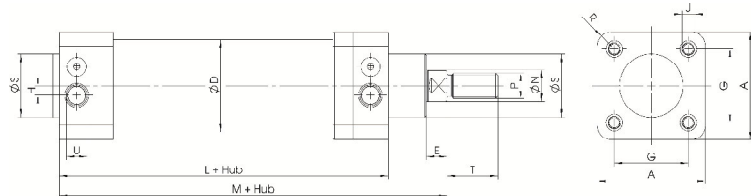
- without magnetic pistons,
- with mechanical end position damping,
- with piston rod nut

Piston $\varnothing$ [mm]	Stroke [mm]	Mass [g]	Order no. Standard PA6	Order no. Food PA12*
32	50	297	P1000198	P1003162
	100	403	P1000199	P1003163
	200	616	P1000201	P1003164
	300	720	P1001525	P1003165
40	50	510	P1000202	P1003166
	100	720	P1000203	P1003167
	200	1140	P1000205	P1003168
	300	1560	P1001627	P1003169
50	50	698	P1000206	P1003170
	100	935	P1000207	P1003171
	200	1410	P1000208	P1003172
	300	1700	P1002611	P1003173

(Further versions of the stroke length on request)

## DIMENSIONS [mm]

Piston $\varnothing$ [mm]	A	D	E	G	H	J	L	M	N	P	R	S	T	U
32	47	40	9	32.5	4.5	M5	94	120	12	M10x1.25	5.5	30	22	G1/8
40	57	48	11	38	6	M6	105	135	16	M12x1.25	6.5	35	24	G1/4
50	68	58	13	46.5	6	M8	106	143	20	M16x1.5	9	40	32	G1/4



\* Polypropylene (PP)

